

Concrete Cover Housing

Concrete cover housing may be shaped and formed free hand or shot around a form. Walls must be straight and plumb, make housing square to pool. Steel cover housing walls same as pool. Do not allow rebound to be used for housing walls.

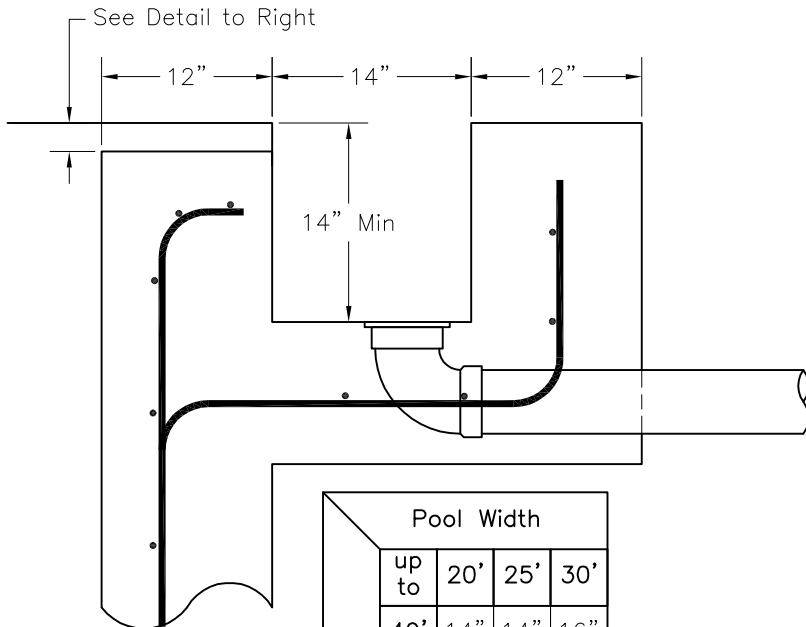
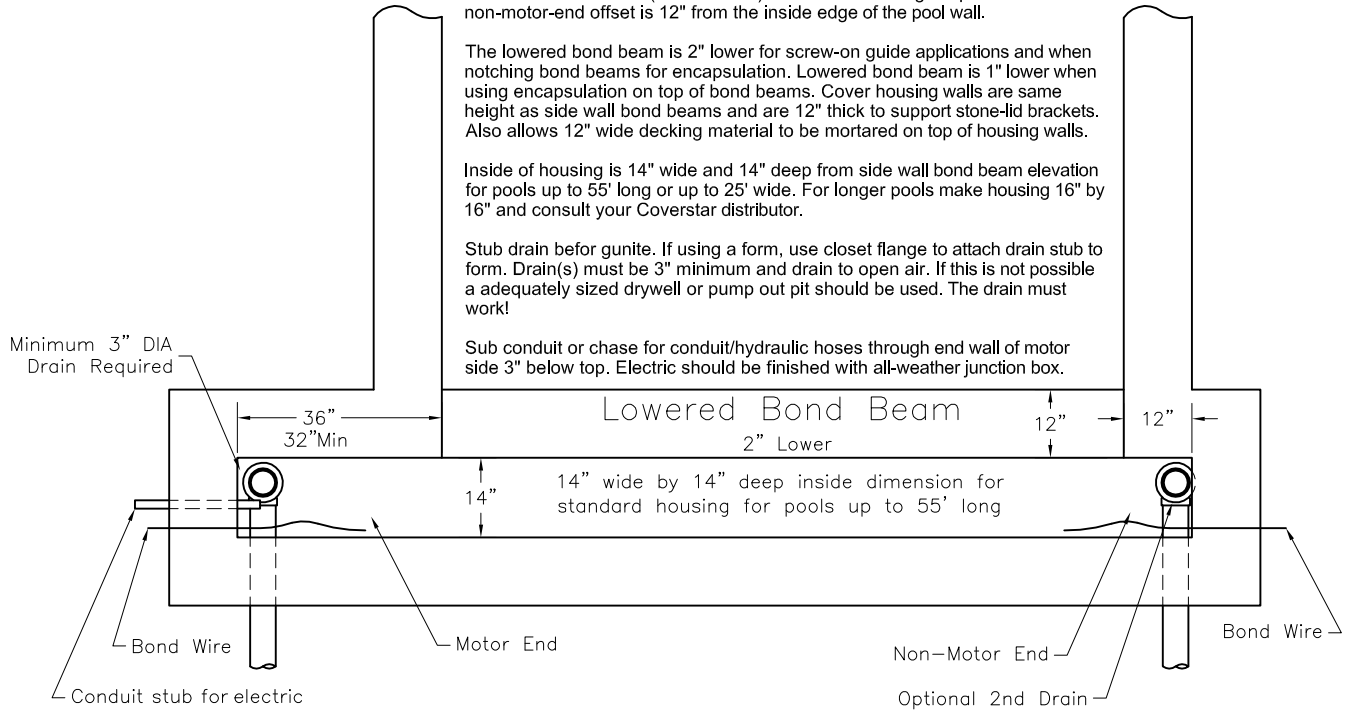
This cover housing show a motor-left, but motor can be on either side. The motor-end offset is 36"(32"minimum) from the inside edge of pool wall. The non-motor-end offset is 12" from the inside edge of the pool wall.

The lowered bond beam is 2" lower for screw-on guide applications and when notching bond beams for encapsulation. Lowered bond beam is 1" lower when using encapsulation on top of bond beams. Cover housing walls are same height as side wall bond beams and are 12" thick to support stone-lid brackets. Also allows 12" wide decking material to be mortared on top of housing walls.

Inside of housing is 14" wide and 14" deep from side wall bond beam elevation for pools up to 55' long or up to 25' wide. For longer pools make housing 16" by 16" and consult your Coverstar distributor.

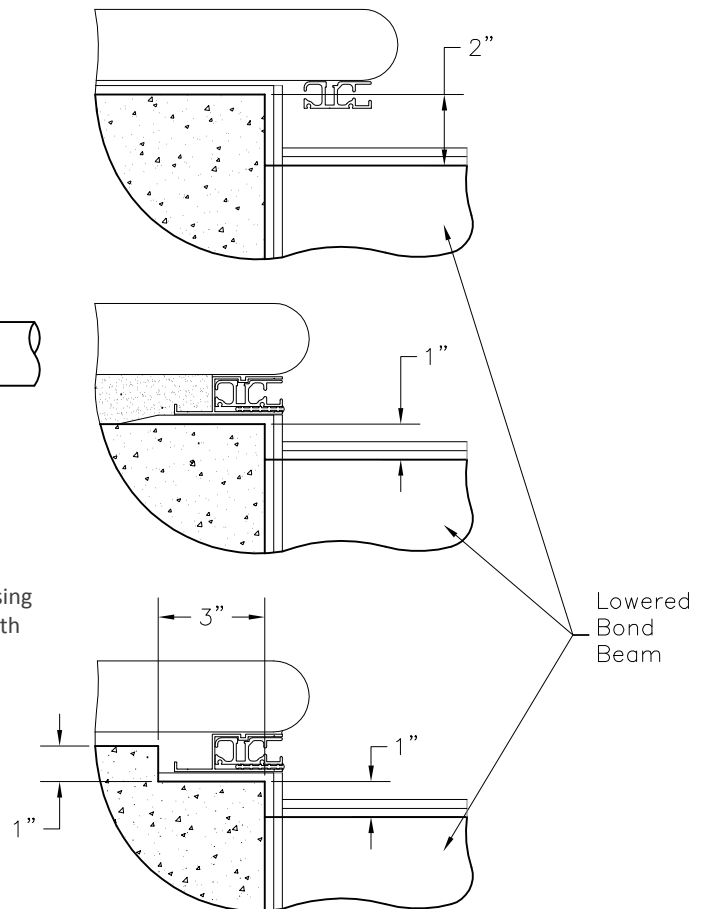
Stub drain before gunite. If using a form, use closet flange to attach drain stub to form. Drain(s) must be 3" minimum and drain to open air. If this is not possible a adequately sized drywell or pump out pit should be used. The drain must work!

Sub conduit or chase for conduit/hydraulic hoses through end wall of motor side 3" below top. Electric should be finished with all-weather junction box.



| | | Pool Width | | |
|-------------|-----|------------|-----|-----|
| | | up to 20' | 25' | 30' |
| Pool Length | 40' | 14" | 14" | 16" |
| | 55' | 14" | 14" | 16" |
| | 65' | 15" | 15" | 17" |
| | 80' | 16" | 16" | 18" |

Minimum Housing Width and Depth



Because coping and deck thickness vary, housing depth is always measured from the top of beam or top of encapsulation.